



*Inspired by the life of Arthur Ashe*

# 2012 Annual Report

**Building our legacy  
and celebrating a banner year  
in neighborhoods throughout the region**







**The mission** of Legacy Youth Tennis and Education is to prepare young people, especially those from under-resourced families and communities, for success as individuals and as active, responsible citizens through innovative tennis, education, life skills, and leadership development programming.

**2012 Annual Report**

Message from the Chairwoman of the Board and the President.....3

*Honoring Our Legacies*

    Bob Brasler.....4

    Marilyn Fernberger.....4

Neighborhood-Based Programs .....5

Site map.....6

*Celebrating Legacies*

    The Green Family.....8

    The Jenkins Family.....8

    The Legacy YTE Family .....8

Center-Based Programs .....9

By the numbers..... 11

Sponsors ..... 12

Income and expenses..... 17

History ..... 18

Governing and Advisory Board..... 19

**A Message from the Chairwoman of the Board and President**

We are pleased to present our organization’s first Annual Report under our new name, Legacy Youth Tennis and Education. Since 2002, Legacy had been privileged to license the name “Arthur Ashe” from Arthur Ashe, Inc., during which time our organization was able to provide opportunities to an ever-increasing number of young people throughout Philadelphia, Camden and the wider region. The licensing agreement recently ended after ten years, and we are delighted that our community rallied together to create a wonderful new name that captures our history and mission.

The theme of this year’s Annual Report is “Building our Legacy.” This theme underscores our new name, affirms the rich tradition of individuals and families who have built our organization, and captures our desire to support many more generations of young people. Over the past sixty years, many passionate and devoted individuals wove the fabric of our organization. They did so with great care and pride. We are privileged to have the iconic Arthur Ashe as an important part of this long lineage and legacy of pioneers. Our legacy is comprised of many founders and organizational elders, as well as young people, families, alumni, and many current coaches and staff who grew up in our program. This history of inspired leadership will serve us well as we begin our seventh decade of serving young people in the Philadelphia region.

Our rich, intergenerational fabric is evident every day. Parents and grandparents watch their children play on the same playgrounds where they also learned a love for the game when they were kids. Former players and coaches routinely return to our organization as volunteers and mentors, summer and year-round coaches, and full time administrators who give back to today’s young people. The tradition of giving back and making things better for the current generation of children is central to our organization’s culture and purpose.

This year has been an outstanding one in terms of programmatic and organizational growth, anchored by our ambitious 5-year Strategic Plan adopted in December of 2010 by our Board of Directors.

- We had the largest neighborhood-based after-school program in our history, serving over 1,300 kids at over thirty schools and playgrounds.
- We just finished the 43rd summer of our National Junior Tennis and Learning program, serving over 1,400 young people at 40 sites in Philadelphia and Camden.
- Our youth leadership program, the Goodstein Junior Leaders, is filled with 50 high school students representing many of our Center and neighborhood-based programs. These leaders designed and executed an impressive array of community improvement projects throughout our area and their work will be expanded internationally this coming year with partnerships in Haiti and Kenya.
- Our Center-based tennis clinics are overflowing with kids from literally dozens of Philadelphia neighborhoods and the surrounding counties. Several of these kids are competing at the highest levels of USTA tournaments in our district, section, and nation.
- We have developed partnerships with several higher education institutions including Drexel, Philadelphia University, Penn, Rutgers-Camden, and Temple to ensure that our young people who live in the immediate neighborhoods of these campuses can receive meaningful pre-college exposure.

This significant progress would not be possible without the dedication, leadership, and generosity of our individual and institutional partners. On behalf of the 4,500 young people we serve every year, please know that we are grateful for your much needed participation.

With much gratitude,



*Shelley Smith*  
Shelley Smith  
Chairwoman of the Board



*Kenny Holdsmen*  
Kenny Holdsmen  
President



## Celebrating Bob Brasler's Legacy

Over thirty-five years ago, Bob Brasler joined our organization's board and, with his wife Sibby, dramatically upgraded our ability to support young people. On the night of June 26, Bob's two-year battle with cancer ended in the comfort of his home. We joined with hundreds of Bob's friends and family in June to celebrate his life – a 76-year journey filled with purpose, love, civic and business leadership, and many meaningful relationships. Bob Brasler, like

Arthur Ashe and many other individuals on whose shoulders we stand, is a significant part of our Legacy. "We are" because of "who they were" as leaders of our organization and in society.

When our new Center was being built prior to its 2006 grand opening, Artis Ore and Bob co-chaired the committee which oversaw the site selection, design, construction, and vendor relationships. Two years ago, Bob wanted to help us lower our energy costs so we could increase support for our programming. He led our staff and board through a process that resulted in a massive array of solar panels on our rooftop, and a conversion to more energy efficient lighting. The project was complex and cumbersome. Bob was the driver and this gift will keep on giving for years.

In December 2011, we celebrated Sibby and Bob at our annual Brunch is Served event for their invaluable leadership and dedication. We also established the Brasler Fund to provide opportunities for under-resourced children to participate in programming at our Center. The funds are being used to provide direct services to several young people from throughout the city who will be transported in our vans to the Center to participate

in tennis clinics, individual lessons, and tournaments, while also receiving mentorship and opportunities to engage in our youth leadership program. The Brasler Fund will also allow us to provide tennis equipment to some of the neediest of these children.



## A Tribute to Marilyn Fernberger

Our organization is extremely blessed to have been cared for and stewarded by Mrs. Fernberger and her family. Marilyn Fernberger died on May 2, 2012 at the age of 84. Mrs. Fernberger will always be remembered as one of the earliest, most formidable and most valuable pioneers of the organization.

This heroic woman served on the Board of the Philadelphia Tennis Patrons Association, which was founded in 1952 and is the predecessor organization to Philadelphia Youth Tennis, Inc. which became Arthur Ashe Youth Tennis and Education in 2002. She always cared deeply about providing opportunities for all young people, especially those from families without abundant resources.



## Neighborhood-Based Programs

### After-School Tennis, Tutoring, and Youth Leadership Initiative

Our after-school programming provides youngsters with positive life lessons and teaches important personal skills such as self-discipline, self-reliance, sportsmanship, and non-violent conflict resolution, all in a constructive, safe, and nurturing environment. For the 2011-2012 school year, our after-school program served approximately 1,235 children at 25 sites. A majority of these sites were located in low-income Philadelphia neighborhoods, helping accomplish our objective of reaching neighborhoods of the city with large concentrations of underserved, at-risk children.



90% of the program participants are African-American and 87% of the children in the after-school program come from households with family income below the poverty level, as defined by the federal government. Participants are ages 8-13.

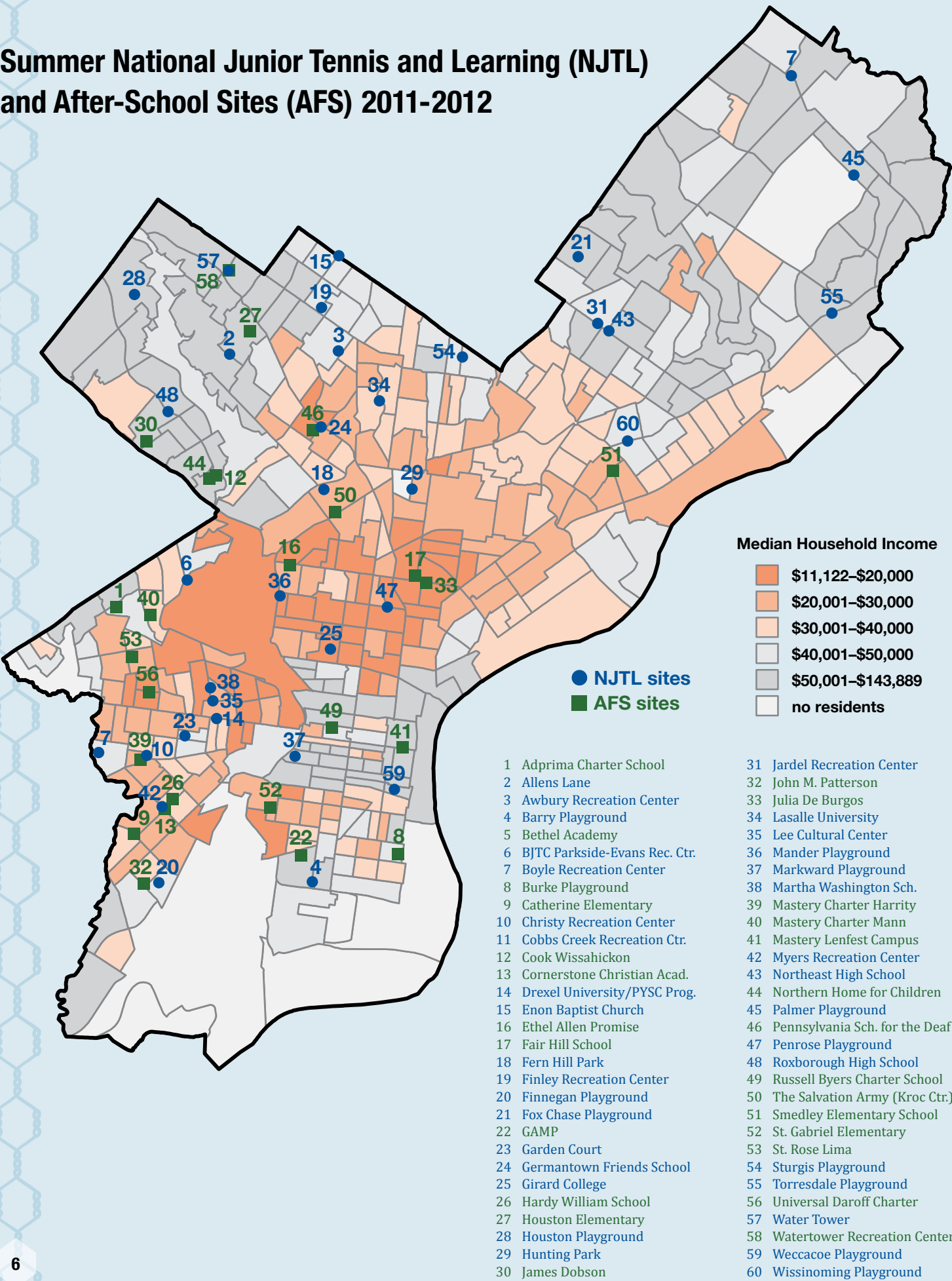
### Love 2 Serve

This program provides high-quality tennis instruction and educational support to over 50 children and teens at the Penrose and Mander recreation centers in Philadelphia during the school year and expanded to two additional sites in the fall of 2012. In addition to year-round tennis instruction, homework help, healthy meals, and life skills training, students are also transported to the state-of-the-art Legacy Youth Tennis and Education Center once a week for additional tennis and enrichment activities in our computer learning center. The project also engages in community development work by connecting grassroots organizations, key stakeholders, and other anchor institutions in the immediate community to develop and execute a strategy for bringing more resources to support young people in and around the recreation center. Thanks to our supporters: Commonwealth of Pennsylvania Department of Community and Economic Development, Lomax Family Foundation, and PECO.





Summer National Junior Tennis and Learning (NJTL) and After-School Sites (AFS) 2011-2012



Mantua

Our goal is to create rewarding educational and athletic experiences for young people in the Mantua community in West Philadelphia who face obstacles in graduating high school and gaining admission to a four-year college. This program emphasizes engaging in pro-social behaviors or put differently, steering clear of risky behaviors related to drugs and alcohol, violence, unsafe sexual activity, and disengagement which leads to underachievement. Legacy, in collaboration with Drexel University, Drexel’s Lindy Scholars Center for Civic Engagement, and the Philadelphia Youth Sports Collaborative (PYSC)—a collaboration of multiple non-profit organizations that use sports to benefit local children and youth, particularly those from under-resourced environments—is spearheading an initiative called Mantua in Action. The initiative is a strong, place-based model for neighborhood-based programming, which has potential to drive real social impact for young people and communities.



The program was formally launched in the summer in conjunction with the NJTL program. We will be expanding it to a year-round effort in collaboration with our partners.

The Camden Project

This after-school and summer tennis and nutrition program features partnerships with Rutgers University-Camden, Cooper Hospital, and Camden Public Schools. During the 2011-2012 school year, the program served 80 young people at two schools.



During summer 2012, we focused on three major objectives for the program: delivering full-day programming by partnering with local organizations or institutions at the Rutgers University North Camden site and the Dudley Grange Park East Camden site; creating weekly opportunities for parent involvement; and creating a high-impact and sustainable program model. As a result, the Camden program provided full-day summer programming to more than 60 young people.

Thanks to our sponsors: Campbell Soup Company, Citizens Bank, the Conant Family, and the Cookie Jar Foundation.





# Family Legacies: Inspiring Stories of our Current and Past Participants

Over the past 60 years, there have been many individuals who have built and shaped our organization whether on neighborhood playgrounds and schools, in the board room, or here at the Center. Here is a brief snapshot of just a few people who constitute a part of the rich, multi-generational narrative that is our legacy.

## The Green Family

Frank Green Jr. and Tina Sloan-Green are life-long athletes and tennis players. Tina is the co-founder and long-time director of the Black Women in Sport Foundation (BWSF), located in Philadelphia. Both of their children, Traci and Frankie III got their start with our organization. Traci served as the head women's coach at Temple University and now occupies the same position at Harvard University as the first African-American female tennis coach in the Ivy League. Traci has twice hosted groups of our female Future Stars players for a day at Harvard to learn about the student-athlete experience and gain knowledge of what it takes to become a strong player, student, and person. And, we have just launched a significant neighborhood-based program in Mantua with Drexel and BWSF in partnership with Traci and Frankie's dynamic mother Tina.



## The Jenkins Family

Duwaine Jenkins is a long-time NJTL Regional Supervisor and the coordinator of middle and high school tennis for the School District of Philadelphia. Like Duwaine, his daughter Courtney has grown up in our organization and is now a Junior Instructor in the NJTL program and a winner of the Stern Cup. Duwaine's mother and Courtney's grandmother is also an avid tennis player and youth worker who teaches in our summer NJTL program. Three generations of Jenkins are working together to give back to their community through our organization.



## The 'Legacy' Family

In addition to the many great families who have played here over the years, we are lucky to have a number of coaches and staff people who grew up in the program and chose to come back and work at the Center as adults. They have been connected to the organization for most of their lives and have chosen to give today's youth the same experience they had growing up. These individuals include and are not

limited to Kareem Bryant, Hashaan Freeman, Jon Glover, Kristen Harris, Lance Lee, John McGinty, Terrance Scott, Kiara Smith, Lavell Sutton, and Kein Wilson.

## Summer National Junior Tennis and Learning (NJTL)

We had a strong summer of NJTL programming. The participant numbers were up from 1,200 kids in 2011 to 1,425 in 2012. Moreover, we added several low-cost (\$35 for the summer) sites in high poverty communities, and have begun taking steps to transform these sites into full-day camps in which the children will have the NJTL experience plus access to reading, other sports, and a healthy meal.

Thanks to our sponsors: Valerie and Ken Baker; Citizens Bank; Comcast Family of Companies and NBC10; Lindy Communities, Come Home to Lindy, Since 1939; PECO; the City of Philadelphia Parks and Recreation; and USTA Serves.



## Center-Based Programs

### Indoor Clinics and Camps

As a USTA Certified Regional Training Center, we play a vital role in training and developing junior players and tennis coaches throughout USTA Middle States section.

Last year, 1,200 young people participated in indoor programs at our Center. With a library and computer classroom, it offers a safe place for children to socialize, finish homework, or exercise before or after their scheduled clinic. Each of the indoor programs includes life skills and access to educational resources.

Our indoor programs include:

- Munchkin (4-7 year old beginners)
- Junior Development, Junior Competitive, Junior Advanced (beginner, intermediate, advanced)
- Academy (district and sectional caliber player)
- Maximum Performance (sectional and national tournament caliber player)
- Summer and Holiday Camps and Tournaments





Goodstein Junior Leaders

The young people in our Goodstein Junior Leaders (GJL) program have become involved in community service, shoe recycling, organizational decision-making, fundraising, and program creation. Their efforts are being felt both locally and overseas. After the disastrous earthquake in Haiti in 2010, our GJLs began fundraising for the relief efforts in Haiti. After months of research, emails, and calls, the GJLs decided to raise funds to build a school in Haiti. We look forward to a small delegation of our young people visiting Haiti in the spring of 2013 to construct the new school in an impoverished village with buildOn.



In the spring 2012, our young people along with Leadership Philadelphia started to raise the necessary funds to renovate and upgrade the computer equipment in the classroom. This is in preparation for the fall 2012 launch of the Pen Pal Exchange program with our peers at Sadili Oval in Kenya.

We thank the Harvey Goodstein Charitable Foundation for supporting a major part of our work.

Community and School Groups at the Center

The Center is available to community and school groups for daytime school trips and adaptive tennis programming for special needs students supported by the Elizabeth Murdoch Foundation. Legacy has increased its work with schools, churches, and other youth serving organizations who work with children with special needs in under-resourced communities. As a result, we have provided programming for over 200 young people from low-income communities.

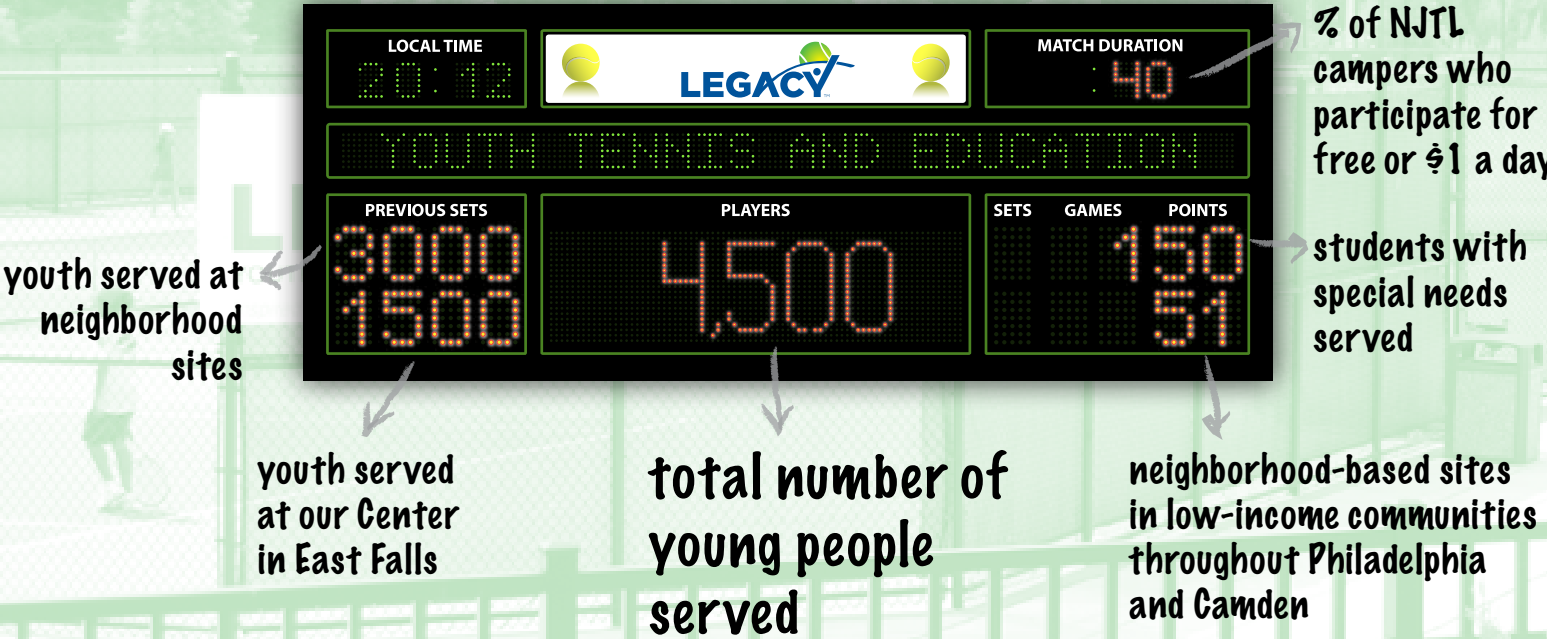


Future Stars

This program identifies talented young people in our programs from lower-income families and communities, particularly communities of color, who demonstrate athletic ability, dedication, and a love of the game of tennis. It features tennis clinics, camps, tournaments, private lessons, and mentoring. This past year, there were 48 students enrolled, 24 of whom advanced to our higher level clinics.



Legacy 2012  
by the Numbers





**PRESENTING SPONSORS****\$50,000 to \$100,000**

Comcast-Spectacor | Comcast | NBC10  
Commonwealth of Pennsylvania, Department of Community and Economic Development  
Swain Tours

**GRAND SLAM SPONSORS****\$25,000 to \$49,999**

AmeriHealth Mercy  
Keystone Mercy Health Plan  
Campbell Soup Foundation  
City of Philadelphia Parks and Recreation  
Toni and Steve Collis  
Independence Blue Cross  
Lindy Communities, Come Home to Lindy, Since 1939  
PECO  
USTA Serves  
USTA  
Wells Fargo Foundation

**TOP SEED SPONSORS****\$10,000 to \$24,999**

Anonymous  
Ace American Insurance Co.  
Alter Family Foundation  
Valerie and Ken Baker  
Thomas E. Beach  
Gifts in Memory of Bob Brasler  
Sylvia and Robert Brasler  
Citizens Bank  
Citizens Bank Charitable Foundation  
The Cookie Jar Foundation  
Cozen and O'Connor Foundation, Inc.  
Drumcliff Foundation  
James Fernberger and Mary Walto  
Lynn and Clay W. Hamlin III

Hess Foundation, Inc.  
J and J Snack Foods  
Lomax Family Foundation  
Joe Messner Jr.  
Mercedes Benz of Fort Washington and West Chester  
The Philadelphia Foundation, Youthadelphia The Fund for Children  
Philadelphia Indemnity Insurance Co.  
Jean Marc Rotsaert  
William Sasso  
Irene and Fred Shabel  
Ian and Linda Swain  
UHS of Delaware  
USTA Player Development Incorporated  
Vanguard Charitable Group

**CHALLENGER SPONSORS****\$5,000 to \$9,999**

Anonymous  
Aaronson Foundation  
The Addis Group  
Apax  
Bank of America Charitable Foundation  
Ardeith Black  
Laura and William C. Buck  
CME Services  
Credit Suisse  
Davidson Trust Company  
Lisa Detwiler  
Enterprise Holdings Foundation  
Gifts in Memory of Marilyn Fernberger  
General Counsel Legal Advisors, LLC  
The Hamlin Family Foundation  
Harvey Goodstein Charitable Foundation  
Internet Capital Group  
Raye E. and Jerry L. Johnson  
K Ten Kids Foundation Inc.  
Melissa Kaschak  
Lewis Katz  
Kolsby, Gordon, Robin, Shore and Bezar  
Sandra and Kenneth Krieg  
Gail and Sanford Lipstein  
Merrill Lynch  
Elizabeth Murdoch Foundation  
NDH Capital Corporation / Structured Growth Capital  
Patricia Kind Family Foundation  
Philadelphia Contributionship Ins. Co.  
Philadelphia Indemnity Insurance Co.  
PNC Bank  
PRWT Services, Inc.  
Saul Ewing LLP  
Scott Schusko  
Hope Berman and Eric Spieler  
UGI Corporation  
United Way of Southeastern PA  
University of Pennsylvania Health System  
Taeson Vellios

**BASELINE SPONSORS****\$2,500 to \$4,999**

Archer and Greiner  
The Beneficial Foundation  
Biz Equity LLC  
Blank Rome LLP  
Irma and Norman Braman  
Bryn Mawr Hospital

Bryn Mawr Trust Company  
Elia D. Buck  
Citizens Elect Dwight Evans  
Colliers International  
Corporate Facilities, Inc.—THE Knoll Source  
Ricki and Andrew Eisenstein  
Enon Tabernacle Baptist Church  
First Trust Bank  
Glenmede Trust Company, NA  
Sandra E. Goodstein  
Graham Partners Inc.  
Marybeth Henry  
IBEW Local Union 98  
JJ Kalm Foundation  
Barbara and Charles Kahn Jr.  
Keating Hospitality  
Kutak Rock LLP  
Edward Levin  
Louis and Sandra Berkman Foundation  
Admiral Thomas C. Lynch  
Medical Guardian  
Mickelberg Family Foundation  
H Laddie Montague Jr.  
MyCIO Wealth Partners  
NBC Universal  
Sherry and Mark Nottingham  
Wendy and Russell E. Palmer  
Raymond Park  
Jean and Steve Park  
Melba Pearlstein  
Chuck Pennoni  
Jill and Philip Plotnick  
Preferred Sands Holding Co.  
Julie Walters and Sam Rose  
Sarah B. and John S. Schmader  
Dr. Franklyn Scott  
TD Charitable Foundation  
The Tobin Family Foundation  
Edward Tress  
Trujillo Rodriguez and Richards LLP / One Point Public and Private Solutins, LLC  
Tucker Law Group, LLC  
USTA Middle States Section  
Joe Williamson  
Fiona and Leighton Yohannan

**FRIEND SPONSORS****\$1,000 to \$2,499**

Acosta  
Kenneth Adelberg  
John R. Alchin  
Aqua Charitable Trust  
Laura Armstrong  
Leslie and Jonathan Bari  
Deborah Neimeth and George Barrett  
Christine and Leif Beck  
Willo Carey and Peter Benoliel  
Ilyce and David Benton  
Toni Seidl and Rick Berkman  
David Binswanger  
BlackRock Financial Management  
Ellen and Peter Bodenheimer  
Ned Borowsky  
Boscia Family Foundation  
Lois and Julian Brodsky  
David S. Broida  
Amy and Marc Brownstein  
Karen and Carl Buchholz  
Gloria and Melvin Chisum  
Mary Clark  
Amy and Michael Cohen  
Congreso de Latinos Unidos  
Coventry First LLC  
Nora and Michael Cyr  
Lori Dabrow  
James Davidson  
Phyllis Palmer Dirkes  
Kathy and Henry Donner  
Duane Morris LLP  
Eastern Regional Medical Center  
Brooke and Barry Edelstein  
Emerald Advisors  
Brian Engel  
Roslyn and Charles Epstein  
Ellen W. Fernberger  
Joseph Fetterman  
Andrew Fisher  
James J. Fitzgerald IV  
Frenkel Family Foundation  
John Fry  
Zach Fuller  
Lauren and Shaun Gates  
Dena and Morey Goldberg  
Greater Philadelphia Tourism Marketing Corporation  
Leslie Benoliel and L. Alexander Hamilton  
The Haverford Trust Company  
Cindy and David Horowitz  
Shari and Robert Hunn  
Bev and Keith Jennings  
Bob Keyes  
Morris Kurtzman  
Brook Lenfest  
Christopher Lewis  
Elaine Lindy  
Manko, Gold, and Katcher LLP  
Lynn and Joe Manko  
David Marberger  
Sam and Michael Markovitz  
Emily Marks  
Sandra and David G. Marshall  
Vincent McGuinness  
Ellen and Joseph J. McLaughlin  
Roger Milgrim  
Mary K. Dougherty and Erik Neumann  
Lisa and Chris O'Brien  
Park America, Inc.  
Clifford Pearlman  
Pew Charitable Trusts  
Philadelphia Activities Fund  
Philadelphia Convention and Visitors Bureau  
Philadelphia Eagles  
The Philadelphia Foundation  
The Phillies  
Maureen and Samuel H. Pond  
The Rhode Island Foundation  
Rittenhouse Foundation  
Paige Roberts  
Theresa and Michael Rodack  
Ross Family Fund  
Samuel P. Mandell Foundation  
Savran Benson LLP  
Lynne and Steve Savran  
Gifts in Honor of Irene and Fred Shabel  
Cynthia and Meyer Silver  
Alice and Andrew Simon  
Jane and Richard Singer  
Amy Smith  
The Smyler Firm  
Stephen Spinelli  
Anne and Gary Stein  
Susquehanna International Group, LLP  
Robert A. Swift  
Eric Toatley  
Barbara and Ken Toscano

United Way of Greater Lehigh Valley  
Judy and Ken Weinstein  
Carole and Jay Weitzman  
Wells Fargo Advisors  
Young Adjustment Company

**SET SPONSORS****\$500 to \$999**

1027 Conshohocken Road, LP  
Marc Abo  
Dennis L. Adams  
Catherine and Laurence Altman  
Stacy and Mark Bank  
Diane Cohn and Robert Bass  
Frank G. Binswanger Jr.  
John K. Binswanger  
Bluestein Wealth Management Group of Wells Fargo Advisors  
Boeing Charitable Trust  
Patricia Boucher  
Gary Bromberg  
Susan W. and Cummins Catherwood  
Suresh Chakaravarthi  
Mila and Bernard Chavis  
Chex Finer Foods  
CLL Towne, Inc.  
Andrea and Bernard Clyman  
Samuel Cohen  
Congregation Rodeph Shalom  
Mary Jo Barthmaier and Stuart Connelly  
Deborah and Ciro D'Angelo  
Nicole D'Angelo  
Bonnie and Emery Davis  
Andrea and Paul DeBotton  
David Dembitzer  
William Dwyer  
Robert Edelstein  
Staci Eggelston  
Kathy and Harold Epps  
Michelle Esposito  
Martha Eyerly  
Anita and Bruce Ficken  
Robert J. Fossler  
Wendy Trow-Fox and Remy Fox  
Geraldine Dietz and Richard Fox  
Alyne and Richard Freed  
Walling Gardner  
Lisa Glassner  
Gifts in Honor of Jon Glover and Justin O'Neal  
Joe Guardino  
Vipul Gupta  
Mindy and Kent Gushner  
Beth and Steven Haas  
Seth Hagarty  
Mary Hager  
Gifts in Memory of Jeremy Hunn  
Impact Dimensions, LLC  
Garrett Johnson  
Letitia Johnson  
Jeff Jubelirer  
Toni Kaloustian  
Victor I. Kasser  
Bob Katherman  
Robert Katz  
Madeleine and Steve Kessler  
Chi Wan Kim  
Jamie Klein  
Robert A. Korn  
Jack Ladden  
Jeremy Lenderman  
Frank Lindy  
Joshua Lindy

Philip B. Lindy  
Ric Lipman  
Susan Lipson  
Amina and Tom Loder  
Susan Brune and Carl Loewenson  
Cynthia and Martin Lutschaunig  
Rosalie Maggio  
James Martine  
Meg and Tom Mayer  
McGinley Family Foundation



Susan Paule and Brian McLaughlin  
Timothy Medlock  
Salli and Stephen Mickelberg  
Millstein Charitable Foundation  
Denise and Stephen Mitnick  
Melissa and Stacy Mogul  
Alan Molod  
Henri and Anthony Moore  
John Mulligan  
Daniel Muroff  
NAI Keystone Commercial & Industrial, LLC  
Karim Nanji  
Beth and Russ Napolitano  
Artis T. Ore  
Marlynn Orlando  
Philadelphia Association of Black Sports and Culture  
Bob Pistor  
Wendell Pritchett  
Privateer Enterprises  
Sheryl and Scott Reidenbach  
Republic Bank  
Ronald Rubin  
Gregory R. Santore  
Jean Saparito  
Gifts in Memory of Marshall Savage III  
Robert I. Schnall  
Shelley and Gordon F. Schwartz  
Barbara Scott  
Nancy and Stuart Selarnick  
Stefanie and Alex Seldin  
Robin and Jay Several  
Alya Sherman  
Judith Sills  
Stephen McWilliams and Walter Skilton  
Michael Sloane  
Stephanie Smith  
Mark Sobel  
Marc Specter  
Stephen P. Stanley  
Wendy Epstein and James Steiker  
Christina Sterner  
Gwen Stokes  
Thackeray Partners LP  
Alison and Emanuel Tress  
Valley Green Bank  
Hope and John van Beuren  
Kimberly Vivevette  
Muriel Voynow



Cindy Webster  
Sonya Weigle  
Michael Weinstein  
Faye Senneca and Richard Weisenberg  
Sharon Pinkenson and Joseph Weiss  
Marian and Norman Wolgin  
Thomas R. Yorko  
Diane and Gil Young  
Paul Young

MATCH SPONSORS

\$250 TO \$499

Diane Augustine  
George Awad  
Marcie Baker  
Marilyn Benedict  
Gifts in Honor of Ilyce Benton  
Stephanie Blumenfeld  
Michael D. Blunt  
Boenning and Scattergood, Inc.  
Jay Bornstein  
Joanna Bratt  
Judith Browdy  
Benjamin Cohen  
Jodi Cohen  
Margaret and Joel Cohen  
Terri and Nathaniel R. Cohen  
Michelle Collins  
Mary and Constantin Cope  
Corexcell LLC  
Lisa and Joe Costigan  
Eric Crawford  
Karen Davis  
Abbie and Patrick Dean  
Robert Degen  
Nick Dinubile  
Toby and Bruce Eisenstein  
Lynne Ferman  
Teresa Fink  
James Foerstner  
Daniel Forman  
Frank Foster  
Jay Frank  
Christine Gallagher  
Andrew George  
Kristine B. Goodman  
Michele and Thomas L. Gowen  
Stanley Greene  
Ken Gross  
Ronna Hall  
Karen Halsman  
J. Anthony Hayden  
Jane and Irving Herling  
Beth and Michael Hines  
Kellyn and Eric N. Hodges  
Holdzman Family Fund  
Gifts in Honor of Kenny Holdzman  
Leonard L. Holdzman  
Marybeth Hurtado  
Margaret and Craig Johnson  
Jay Joseph  
Jeanne and Tom Kady  
Namsook Kim  
Sang Joo Kim  
Michelle Kolessar  
Mary Ellen Krober  
John Kroll  
Nancy Kurtzman  
Michele Levin  
Carolyn Levine  
Joanne F. Madorno  
Christine Matulewicz  
Thomas Mayer

Nicole McElroy  
Maria McGarry and Stephen Mathes  
Michael Meng  
Elizabeth and Charles Meredith  
Morgan Stanley Smith Barney  
Laura and Andrew Munts  
Bernadette Nassib  
Sandy Schnall and Gary Newman  
Shawn Niles  
Jeffrey P. Orleans  
Leo W. Pierce  
Bruce Plotnick  
Sheryl and Jeffrey Potter  
Realty Source, Inc.  
Baba Taiye Renfrow  
Ira Richards  
Sage Scholars, Inc.  
Gordon Saul  
Barbara and Leo Sewell  
Barbara and William Shea  
Cheryl and James Sherman  
Jeffrey E. Smith  
Babette and Harvey Snyder  
Alexandra Solal  
Gilbert Sopher  
Manny Stamatakis  
Robert Steinhart  
The Kestenbaum Family Foundation  
Joan and Perry Tishgart  
Jessica Wang  
Scott Weiss  
Bruce White  
Michael Wilkinson  
Ruth and Morris Williams Jr.  
Elizabeth and Russell Williams  
Women's Interclub Tennis Association  
Douglas Young  
Gifts in Memory of Susan Beaty Young  
Brian Zahn

ACE SPONSORS

\$100 TO \$249

Andy Abramowitz  
Dominic Abruzzese  
David Achey



Dorothea Andes  
Patricia and Joseph Armon  
Ryan Armstrong  
Randal Bank  
Blaire E. Baron  
Eileen and Richard L. Bazelon  
Deborah Beckwith  
Judy Bell  
Bear Betzler  
Albert Bien  
Christopher Blackwall  
Mark Bluestein  
Sandra and Marvin Blumberg  
Mark Bobb  
Franklin Bobrow  
Ronald Bond  
Pamela Boulos  
Brendan Boyle  
Debra Brady



David Brand  
Gifts in Honor of Bob Brasler's 75th Birthday  
Beth and Mitch Braverman  
Kevin Brinker  
Barbara Brown-Ruttenberg and John Ruttenberg  
Peter Buffum  
Anne and Thurman R. Bullock  
Jane and Francis Bulman  
Evelyn and Howard Burde  
Kristin Burr  
Joan and Larry Burrill  
Joyce and Donald Cafiero  
Oliver Carley  
Ellen and Neil Carver  
Beatriz Castaneda  
Chengning Chang  
Rodney Cherry  
Parampreet Chhina  
Emma Chiampou  
Lucille and Anselma Choplinski  
Dean Cimino  
Kenneth Clark  
Peter Coe  
Marcia and Elias Cohen  
Dominic A. Colaizzo  
Kasey Lynn Connors  
Brittany Cook  
Lynne Cutler  
Nazanin Dana  
Toby and Rich Davidov  
Rob Davis  
Tina Davis  
Jacqueline and James Delaney  
Susan Delaney  
Derrick Dickens  
Nicole Donahoe  
Kevin Dow  
Louisa C. Dubin  
Catherine Eghbali  
DD Eisenberg  
Ivan Espinoza  
Benjamin Feldman  
Gifts in Memory of Marvin Feldstein  
Mary and Joseph J. Fenkel  
Gifts in Memory of Ed Fernberger  
Jeanne Fields  
Carlos Fink  
Jon Fisher  
Richard L. Fluri  
John Flynn  
Eli Freedman  
Marlo and Kevin Freedman  
Cheryl Friedenberg  
Leigh Roger Friedman  
Tom Frieze  
John Fuhr  
Susan Gartenberg  
Elan Gepner  
Christine Girod  
Jon Glover  
Ann Bassett and Ross Goldberg  
Charles Golden  
Jane Golden

Judith and Joel Golden  
Carol and Stephen Goldman  
Arlene Gordon  
Dolores E. Gorman  
Grant Tani Barash and Altman, LLC  
Mercia Grassi  
Maria Grasso  
Shelley Greco  
Charles Grehn  
Wlodzimierz Grodecki  
Chuck Gupta  
Cynthia and John Harris  
Heidi and Michael Harris  
Audrey and Brandon Hasse  
Joyce Henry  
Michael Henry  
Tony Heriza  
Cheryl and Scott Herman  
Anna Hillman

Barbara and Gerald Marks  
Peggy Marks  
Linda Martinez  
Phyllis Mascioli  
Linda Massey  
Delaine and Douglas Mast  
Colette McElwee  
Shannon McKenna  
Katherine McKenna  
Lindsay McLaughlin  
Members Give  
Jeremy Mennis  
Gifts in Memory of Robert E. Merchant  
Merck and Co., Inc.  
Donna Miller  
Mark Charles Misilli  
Judith Mondre  
June and Andy Morfopoulos  
Megan and Seth Mosier

Stephanie S. Shore  
Myrna Shure  
Nancy Silverman  
Benjamin Smallwood  
Dean Smith  
Rebecca Smith  
Esther and Bernard Sobel  
Sheila G. Spagnolo  
Bernard Spain  
Beth and Peter Stahl  
Samuel Stanford  
Stephen and Julia Harmelin  
Family Foundation  
Kendra Stewart  
Diana Swain  
Douglas Swartz  
Joyce Szanya  
Benjamin Tappan  
Seth Taruni  
Barbara and Wilson Taylor

Jackie Allen  
Craig Alleyne  
Allstate Giving Campaign  
Sheila and Larry Altaker  
Asher and Company  
Lisa Bailey  
Ellen Baker  
Gifts in Honor of Marcie Baker  
Margaret Baker  
Ballard Spahr LLP  
Richard Band  
R.J. Bandos  
Amy Bartosh  
Ira Baseman  
Olivia Batdorf  
Joyce E. Beamon  
Seddon and James Beaty  
Christine Becer  
Bette Begleiter  
Justine Bembery  
Barbara Bender  
Harold and Renee Berger  
Foundation  
Margery and Howard Bleiman  
Lynne Bloom  
Alexander Books  
Atif Bostic  
Lee Bowers  
Yetta and Edward Boxman  
Gifts in Honor of David Broida  
Carleen Brown  
Judith Brown  
Todd Brown  
Lesonya Burrell  
Sarah and Frank Cannatella  
Estate of Mildred Cannatella  
Philip S. Caplan  
Rick Carr  
Edward Carroll  
Carla Carter  
Meredith Carter  
Bruno Casabon  
Stephen C. Chambers  
Melinda Champion  
Ollie Cherniahivsky  
Joan Cholodofsky  
Mark Christian  
Erin Clark  
John Clark  
Linda Clark  
Bruce J. Coin  
Norris Coleman  
Judi and Brian Colgan  
Community Recycling  
Katy Conicella  
Patrick Connell



Anne Hochberg  
Brian Hoffman  
David Hoffman  
Amy and Kenny Holdzman  
Cristy and Mitchell Hollin  
Brittany Horn  
Thomas Howley  
Margaret and Stanford Hunn  
Lisa Hunt  
Allyn H. Jacobson  
Susan Jaffe  
John DeJardins  
Ken Jarin  
Valissa Jarmon  
Annette Leger Jeffrey  
Christina Jessurun  
Kimya Johnson  
Gifts in Memory of Hyman Kanoff  
Judith and Stephen Kastenber  
Linda and Richard Katz  
Paulette Katzenbach  
Marie and Jeff Kenkelen  
Sean Kennedy  
Vicki Kennedy  
Kathy Kilpatrick  
Joanne Klein  
Korin Korman  
Deborah G. and Stuart Kurtz  
Ari Kushner  
Judith K. and Morton A. Langsfeld  
Jeffrey Larsen  
Andrea Lawrence  
Yee-Ming Lee  
Lance Lee  
Julia Levering  
Hillel Levinson  
Gifts in Memory of Raymond Lionda  
David S. Loeb Jr.  
William A. Loeb  
George Loesch  
Elizabeth and Peter Longstreth  
Judith Sorkin Losben  
Peter Loufman  
Michael Lozano  
A. B. Malone

Britton Murdoch  
Jonathan Muse  
Ann Marie Nasuti  
Barbara and Douglas Neufeld  
Ryan Newell  
Andrea and Sven Nommensen  
Robert Nydick  
Mary and Jeremy Orcutt  
Tyra Ott  
Despina F. Page  
Melissa and Al Parker  
Sharon and Donald Parks  
George Parnell  
Aileen and Guido Pasquel  
Jacquie Patterson  
Sally Pearne  
Kitty Perrin  
Gifts in Honor of Jill and Phil Plotnick  
Virginia G. Pope-Eagan  
Liz Proctor  
Merle Rabb  
Susan and Hyman Rabinovitch  
James Rawls III  
Caryn Richfield  
Louis Rose  
Lori Rosenkopf  
Nicole and Brent Ross  
Diane and Robert Rossheim  
Laura and Leonard Rossio  
Susan Rubin  
Gillian Ryan  
Vana Saliyev  
Anthony Salvo  
Barbara Sandonato  
Thomas Sandor  
Alfred Scheib  
Jeffrey Schrader  
Gifts in Memory of Carole Schragis  
Skip Schwartzman  
Jon Scott  
Terrance Scott  
Stephen Segal  
Andrew Seid  
George C. Jr. Shafer  
Deborah and James Shelley  
Annabelle Shore

Lauren Taylor  
Ida Teberian  
The Kranzdorf Family  
Foundation  
The William Penn Foundation  
Carolyn Thompson  
Barbara and Robert Tiffany  
Tina Tinney  
Claire and Paul Toy  
Agnes Trummer  
Lynna Truong  
Kimberly Tucker  
Elizabeth and Peter Unger  
United Way Trust  
Mary Ann Venezia  
Denise Venturi  
Margaret and Fred Vincent  
Kelley and Bob Vogt  
Darrell Vreugdenhil  
Catherine Walto  
Taube and Samuel Weinberg  
Jonathan Weiner  
John Wellenbach  
Al White  
David Wice  
Ellen Williams  
George K. Wills  
Yoram Wind  
Gifts in Memory of Katey Wolgin  
Dan Wu  
Gary Yampolsky  
Maryumi Yanosov  
John Yi

COURTSIDE SPONSORS

up to \$100

Anonymous  
Craig Ablin  
Gifts in Honor of Jackie and Stewart Abrams  
Barbara and Gary Alexander  
Norman E. Alexander  
Aimee Alexander  
Cornelius Alexander IV  
Kantese Alexander  
Ame Allen



James Cousounis  
Carolyn Covington  
Cathleen Craig  
Kimberly Crawford



Rachel Crum  
Elizabeth Dale  
Helen Danicki  
Kathleen Darnall  
Adam Dauer  
J. Holmes Davis IV  
Neile Davis  
Jason Dawkins  
Drew Degen  
Beth Delaney  
Elizabeth Delaney  
Samantha DelPizzo  
Kristin Delussey  
Mary Dennis

Heather Greshock  
Lauren Grieco  
Charles Griffin  
Kaci Griffin  
Mary Bert Gutman  
Charlene M. Guyer  
Troy D. Hagains  
Anthony Haller  
Jenn Hartmann  
Linda and Robert Hartness  
Robert P. Hauptfuhrer  
Stephanie Hayden  
Carol Henderson  
Herr Foundation

Finbarr Mccarthy  
Matthew McClure  
Joan McIlvaine  
Kaitlin McKendrick  
Robyn McKnight  
Sean McNeely  
Stephen McWilliams  
Stephen Megargee  
Randolph Merced  
Peggy Merves  
Bette Begleiter and  
Paul Messing  
Florence R. Meyers  
Middle Island Teachers Assoc.  
Bryan Miles  
Ellen Louise Milgrim  
Ludlow Miller  
ManleyMincer  
Michael J. Minicozzi  
Joann Mizner  
Justin Monteforte  
Charles Morgan  
Andrea and Alvin Moses  
Moving Creations Inc.  
Rhoda and Eugene Muchnick  
Courtney Mullen  
Daniel Mungall Jr.  
Francesca Murasko-Blank  
Melissa Muroff  
Juanda L. Myles  
Nancy and Jerome Neff  
Stephanie Newman  
Emily Nussdorfer  
Roberta O'Dell  
Gifts in Memory of  
William Van O'Linda  
Akpo Omene  
Amanda Osorio

Robert Rosin  
Michael Rothstein  
Ruth and Jan Dubois  
Germain Sanders  
Efrain Samiad  
Salama S. Saunders  
Helen Schaeffer  
Susan Scharf  
Claire Dilullo and  
Antonio Schiavone  
Deena Schneider  
Jared Schulcz  
Margie Schwab  
Sten Schwandt  
Bryan Schwartzman  
Sharon Segal  
Chris Shaknis  
Jill and Thomas Sharp  
Holly Sharpe  
Kathleen Shea  
Danielle Shepherd  
Carol C. Sherman  
Landuleni Shipanga  
Marie Shively  
Chris Shokins  
Steven A. Shoumer  
Lynne and Eugene Silver  
Brian Simon  
Jocelyn Sirkis  
Casandra Snader  
Susan Snedden  
Cathy Snyder  
Kathy and Jonathan Spergel  
Faith Steigelmann  
John Stillmum  
Howard Stredler  
Sahar Sulluki  
Elizabeth J. Sussman  
Lorianna Swain  
Lianda Swain  
John Swartley  
Lee Tabas  
Arlene Taylor  
Brian J. Taylor  
Satta Taylor  
Steve Taylor  
Emily Thompson  
John Thompson  
Lee Ticker  
Cyrus Tingley  
Karen Toner  
United Way of Chester County  
United Way of Delaware  
Heather Veleanu  
Susan Vineberg  
Vote Vitali Committee  
Ellen Wagner  
Kristen Warden  
Richard Warner  
Chris Weber  
Lorna and Bernard Weinberger  
Dava Weinstein  
Elizabeth H. Weiss  
Molly Whalen  
Keith A. White  
Jeannie Whitmore  
Jacqueline Whyte  
Lindsay Wilkinson  
Loistine Williams  
Catherine and Robert Williams  
Arnold Winkelman  
Sharifah D. Ray  
Monica Wrenn  
Irma and Lester Wurtele  
Bonnie Young  
Jonathan Young  
Noelle Zappacosta  
Kuan Zhong



Sharon Pepe  
Nancy Petro  
Michael Pevey  
Dianna Pimlott  
Monique Pittman  
Theresa Pitts  
Rich Popso  
Letitia O. Principato  
Sharifah D. Ray  
Daniel P. Reilly  
Marcia Resnick  
Mehdi Rhazali  
Janice Rhodes  
Sheri and Bruce Risler  
Louis Robinson  
Katherine Robinson  
Gifts in Honor of Brad Rogers  
Leagh Rogers  
Renee Romagnole  
Claire Rose  
Tim Roseboro  
Ira Rosen

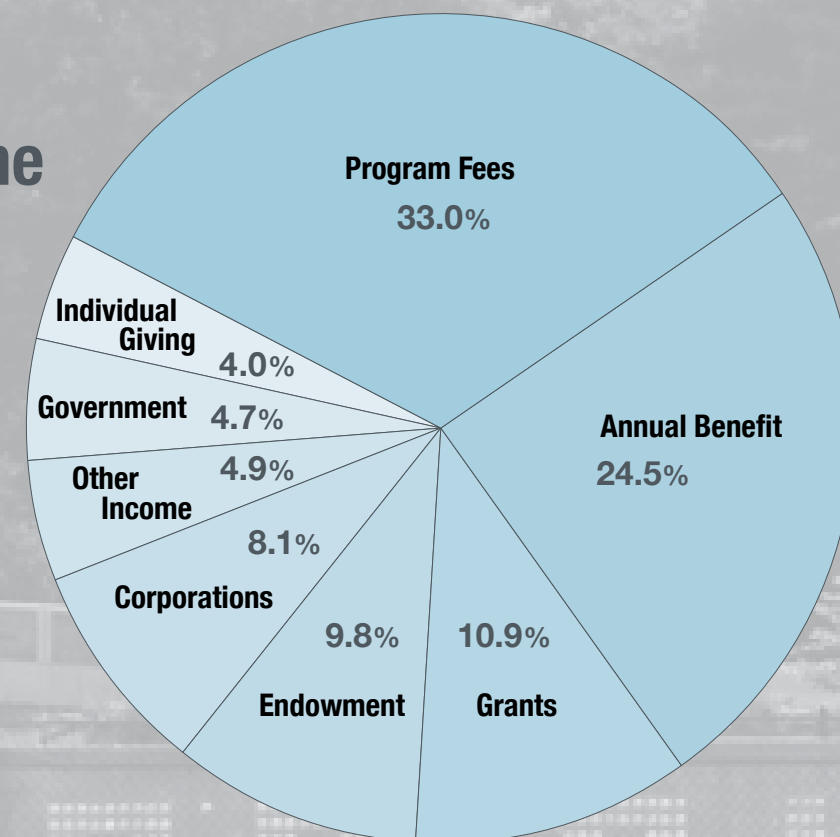
Becky Desmond  
Cheryl DeVose  
Mimi Dimeling  
Jama Dingle  
Francesco Dipaolo  
William Dixon  
Linda and John Donahue  
Leslie Donnell  
Thomas Douris  
Marsha and Joseph Dratch  
Ruth and Jan Dubois  
Jerzy Dutkiewicz  
Kathleen Dutkiewicz  
James Dyen  
Dexter Edwards  
Sonya Edwards  
Craig Eggleston  
Gloria Einbender  
Kimberley Elam  
Gilda and Richard Ellis  
Gwendolyn Enoch  
Marcia and Amy Epstein  
Dwight Evans  
Jerry Evans  
Dan Faber  
Sebastian Felsen  
Shaune Ferrara  
Judy J. Finestone  
Barbara Finkenstaedt  
Gifts in Memory of  
Linda Fisbaine  
Mel Fisher  
Anna M. Ford  
Judy and Richard Franken  
Judith L. Frazier  
King Frazier  
Ken Freund  
Jahleem Furahaali  
Larry Gardner  
Parthenia Gardner  
Susan Garfinkel  
Barbara Gee  
John George  
Abby Germann  
Vincent Giglio  
Kevin Gillece  
Ellen and Dan Gimbel  
Phyllis Glackman  
Leon Glass  
Stephanie Glover  
Jeanette Goble  
Jane Feldgus and  
Mitchell Goldenberg  
Jay Goldenberg  
Greg Goldman  
Debra Goldstein  
Robert Grandy  
Frank Greco  
Anee and Jack Greenwald

Elizabeth Hersh  
Rosalynn and Daniel Heth  
Donald Higginbotham  
Harry Higgins  
Ashley Hill  
Kathryn A. Hodgkiss  
Antionette R. Hollinsworth  
Stephen Horst  
Sandra Hughes  
Rachel Isenberg  
Jerome and Nancy Neff  
Rabindran Jesudason  
Alonzo Johnson  
John Johnson  
Theodore T. Johnson  
J. Lindsay Johnston  
Meg Jordan  
Joseph Juliano  
Jane Kane  
Gifts in Memory of Leonard Katz  
Daniel Katzenberg  
Nancy and Ary Kaufman  
Paula Singer and  
Howard S. Kaufold  
Kyle Keating  
Rachel Kimmich  
Maureen Kincade  
Holly Kinser  
Zhenya Kipperman  
Marcy Knee  
Robyn Knight  
Catherine A. Kobeski  
Carmela Koussis  
Judith Kramer  
Beth and Robert Krick  
Sanjin Kunovac  
Esther and David Kurtz  
Bonnie Kushner  
Richard Ledger  
Jeffrey Lenderman  
Caroline Leopold  
Gifts in Honor of  
Gene Leibowitz  
Eric Lerner  
Myrna and Stephen Levin  
Joel Levinson  
Mindy Levinthal  
George Lieb  
Susan and Samuel Liebman  
Michael Lindy  
Brian Lipstein  
Stephen Lynn  
Carol MacLennan  
Lynne Mancuso  
Carolyn Margolis  
William O. S. Martin  
Loretta Masciantonio  
Kim Bonner Massey  
Heather McCafferty

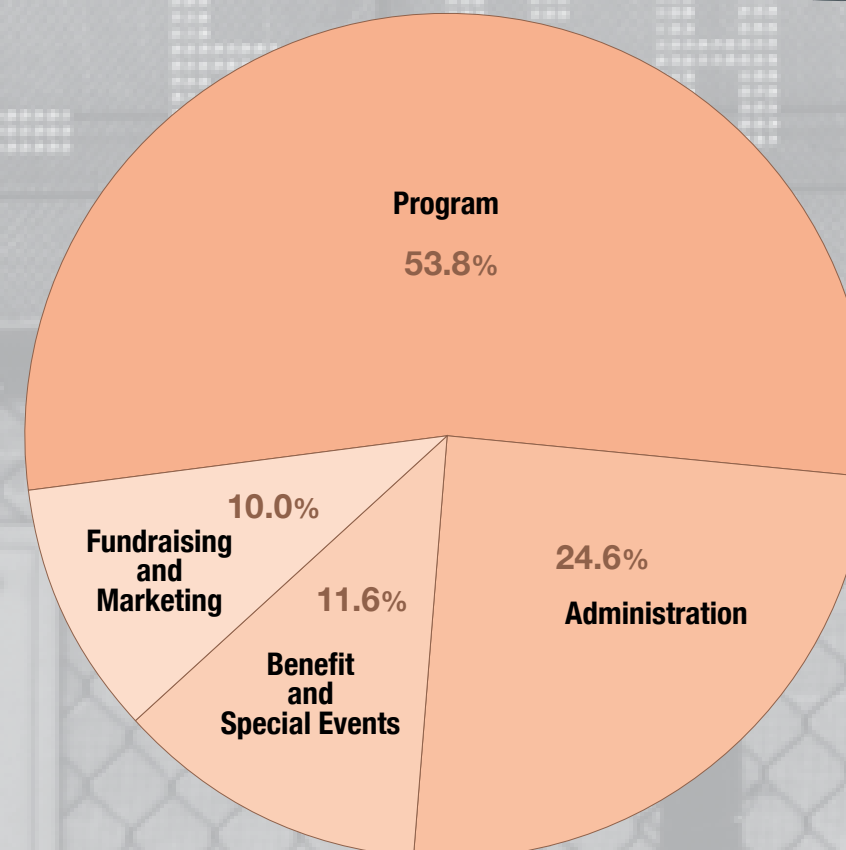


## Income Sources and Expenses (FY2012)

**income**  
total = \$2,692,041



**expenses**  
total = \$2,589,873





# History

In 1952, William J. Clothier II founded the Philadelphia Tennis Patrons Association, which was merged with the Philadelphia National Junior Tennis League 44 years later to become Philadelphia Youth Tennis. In 2003, Philadelphia Youth Tennis became Arthur Ashe Youth Tennis and Education, a leading 501(c)(3) non-profit organization. Three years later, the Arthur Ashe Youth Tennis and Education Center was constructed in East Falls as a premier facility dedicated to innovative youth tennis and education programming. The facility, which opened in 2006, contains a technology center, library, classroom space, and eight indoor tennis courts. The campus has a courtyard for community gatherings and eight outdoor courts, including one with stadium seating.

In June of 2012, the organization changed its name to Legacy Youth Tennis and Education. The name change was due to the expiration of our licensing agreement with Arthur Ashe, Inc. While our name has changed, our commitment to young people, particularly those without abundant resources and opportunities, remains rock solid. The meaning of the name Legacy is two-fold: first, it acknowledges the many organizational leaders on whose shoulders we stand, and second, it signifies our desire to help young people create their own positive legacies as caring and contributing human beings.

Legacy provides tennis instruction, academic enrichment, life skills, mentorship, and leadership and character development, to approximately 4,500 children in the Philadelphia metropolitan area annually through programs at 40 community sites and at

the Center. Using tennis as the primary motivator, we teach positive lessons, build confidence, and provide a framework of personal discipline. Most of our programs are provided at little to no charge to the young people we serve. In November 2012, Legacy Youth Tennis and Education was inducted into the Philadelphia Sports Hall of Fame.



## Legacy Youth Tennis and Education Governing Board

### Executive Committee

Shelley R. Smith, Esq., Chairwoman of the Board  
Robert N. Hunn, Esq., Co-Vice Chairman, Legal Counsel  
James Fernberger, Co-Vice Chairman  
Christopher Lewis, Esq., Secretary  
Ira Neil Richards, Esq., Treasurer  
Albert Parker, Esq., Member-at-Large

### Board of Directors

Kenneth J. Adelberg	Jeffrey Jubelirer
Kamil Ali-Jackson, Esq.	Kenneth Krieg
State Representative	Mary Ellen Krober, Esq.
Brendan F. Boyle	John J. Kroll
David Broida	Alan Lindy
Michael Carter	George Loesch
Kris Casabon	Vincent R. McGuinness, Esq.
Camille Z. Charles	Henri G. Moore
Robert S. Davis, Esq.	Marlynn Orlando
Brad Denning	Grant Palmer, Esq.
Derrick Dickens	Phil Plotnick
Barry M. Edelstein	Nicole Pullen Ross
Andrew Eisenstein	Steven C. Savran
Joseph Fetterman	Dr. Franklyn Scott
Andrea Gilbert	Commissioner Susan Slawson
Joseph R. Godwin Jr.	Jonathan Spergel, Esq.
L. Alexander Hamilton III	Jay Weitzman
Adam Herr	

### Advisory Board

Dennis Alter	Sandra E. Goodstein
Michael Barkann	Thomas L. Gowen Jr.
Thomas E. Beach	Allyn H. Jacobson
Peter A. Benoliel	Jerry L. Johnson, Former
Robert M. Brasler	Chairman of the Board
Carl Buchholz	Kathryn Jordan
William C. Buck	Artis T. Ore
Mary Carillo	Honorable Charles E. Rainey Jr.
Robert M. Cohen	Fred Shabel
Bud Collins	Irene McMenamin Shabel
James M. Davidson	Manuel M. Stamatakis
Christopher Dunne	Linda Swain
DD Eisenberg	Robert A. Swift, Former
John Embree	Chairman of the Board
Robert J. Fossler	







4842 Ridge Avenue  
Philadelphia, PA 19129  
phone: 215-487-3477  
fax: 215-487-1819  
[www.LegacyYTE.org](http://www.LegacyYTE.org)

